



**Pan Asia**  
Corporation Ltd

“Supplying Key Resources into Expanding Asian Markets”

## COMPANY PRESENTATION



## In Major Coal Provinces South and East Kalimantan



## Adding Value to Mid-Tier Projects in Asia

- + Risk capital via regulated markets (ASX)
- + Australian mining & exploration expenditure & standards

- + Resource rich & well located
- + New DFI (Direct Foreign Investment) mining laws
- + Developing; therefore opportunities

**PAN ASIA  
CORPORATION  
LTD**

**INDONESIAN  
PROJECTS**

**RELIABLE  
EXPANDED  
SUPPLY TO ASIAN  
MARKETS**

- Restricted access to appropriate risk capital
- Reliability of supply from mid tier projects

- Quality assuring to JORC / feasibility status.
- Attract significant project development & offtake partnerships.

# Flagship Pre Development Project – “TCM”

## South Kalimantan

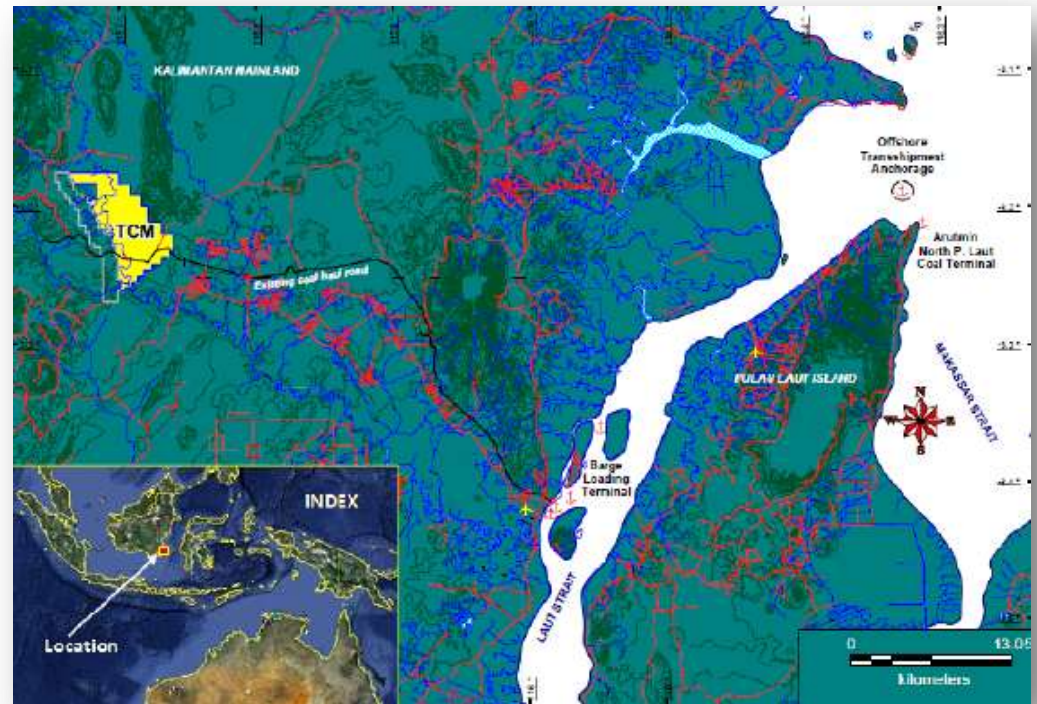
**75% interest (25% Local Partners) (3,044Ha)**

- Immediately adjacent to PT Arutmin ATA mine
- 4 main coal seams dip into TCM
- High calorific value thermal coal  
6,500 – 6,800+ kcal / kg (adb)
- 114Mt of JORC measured, indicated & inferred resource, with significant potential to increase
- Potential to unlock value in “stranded boundary coal” via expansion of adjacent ATA open pit mine
- Haul road in  
(51kms to Batulicin Barge Loading Terminal)



# TCM Project - Resource

- JORC measured resource = 35Mt
- JORC indicated resource = 35Mt
- JORC inferred resource = 44Mt
- TOTAL JORC RESOURCE = 114Mt\***
- Production IUP Issued
- Offtake Rights - PZC



\* Refer Appendix 1 for details

# TCM – Project Concept

<b>Style of Mining</b>	Mechanized Longwall
<b>Target Sellable Coal</b>	1.5Mt pa
<b>Mine Life</b>	15 years +
<b>Target Coal C.V</b>	6400 + GAR
<b>CAPEX + OPEX pre production</b>	~ US\$150m – US\$200m

Conceptual project parameters targeted by the company and reviewed by PT Kopex Mining Contractors (KMC). These remain subject to results & further analysis (Completion of Feasibility Study).





- Globally one of the largest groups in the coal mining sector
- Operates in over 50 countries
- Successful underground trial mining in Kalimantan
- Co-funding, drilling and F.S in return for rights to participate in projects

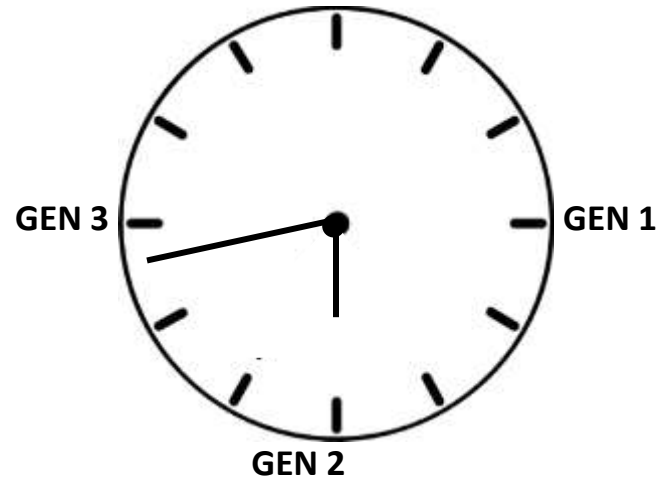


*Headquarters of Kopex located in  
Katowice - Poland*

## INDONESIA'S COAL CLOCK

### 3<sup>rd</sup> Generation Coal Projects "GEN U"

- Near Coast
- High Coal Quality Available
- Infrastructure Already In
- Big Tonnages Possible
- High CAPEX & Mining OPEX



### 1<sup>st</sup> Generation Coal Projects "GEN O"

- Open Pit
- Near Coast
- Big Tonnages Available
- Low CAPEX/OPEX

### 2<sup>nd</sup> Generation Coal Projects "GEN O<sup>2</sup>"

- Open Pit
- Longer Haul/Barge
- Lesser Coal Quality
- Needs Big Tonnage
- May Need Infrastructure

## OFFERS

- High Coal Quality
- Large Tonnage
- Good Location
- Infrastructure In
- Minimum Impact on Other Stakeholders
- Forestry
- Possible Incentives

## NEEDS

- Expertise
- Technology
- High CAPEX
- Higher Mining OPEX

## THE BIG PICTURE

- **High Quality Coal** → High Revenue per tonne
- **Big Tonnage Potential** → Supports High CAPEX
- **Location and Infrastructure** → Offsets Higher Mining Costs

## KEY DETAIL - Technical

- **GEOTECH** - Rock Integrity  
- Faulting
- **PARTING** - None or small (washing /yield)
- **OTHERS** - Gas, water, spontaneous combustion etc



# Flagship Exploration Project – 2<sup>nd</sup> Generation Re-Rating

## High Priority Exploration

### BCKP (Right to Earn 50% interest)

East Kalimantan (11,690 Ha) - ~ 5,600kcal/kg (adb)

- Large area
- Formation known to host very large deposits
- Good coal quality
- Indicative coal seam thickness from 0.6 Mt to 4.2 Mt

Mine Rating	✓ ✓ ✓ ✓
Transport Rating	✓ ✓
Coal Quality	✓ ✓ ✓ ✓



Coal outcrop at BCKP over 3m thick



# Resources & Targets

			CALENDAR YEAR 2012	
Project	Status	Interest	Project Target	Attributable Target
NAD	<b>Production</b>	<i>Financing &amp; Offtake</i>	4 Mt*	---
TCM (underground)	<b>Pre-Development</b>	75%	114 Mt	85 Mt
TCM (possible open pit)	<b>Pre-Development</b>	75%	3 Mt	2 Mt
<b>SUB TOTAL – JORC Projects</b>			<b>121 Mt</b>	<b>87 Mt</b>
BCKP	<b>Exploration</b>	<i>50% Earn</i>	50 Mt	25 Mt
OTHER	<b>Exploration</b>	80%	10 Mt	8 Mt
<b>SUB TOTAL - Post Exploration</b>			<b>60 Mt</b>	<b>33 Mt</b>
<b>TOTAL</b>			<b>181Mt</b>	<b>120+ Mt **</b>

\* Offtake

\*\* Company goal is for production to represent approximately 3 % + of attributable target

# Australian Coal Companies - Enterprise Values / tonne

**Average EV/tonne of JORC Resource  
(Development/Production)  
= A\$1.98**

**Average EV/tonne of JORC Resource  
(Exploration)  
= A\$0.46**

**Targeted Market Cap for PZC in 2012  
Development = A\$198m  
Exploration = A\$46m**

## EV/Resource Tonne

Code	Company	Status	EV (A\$m)	Resource (Mt)	EV/Resource (A\$/t)
<b>Developers &amp; Producers</b>					
CNA	Coal & Allied Industries Ltd	Dev/Prod.	10,598.4	4,360.8	2.43
NWH	New Hope Corp Ltd	Dev/Prod.	4,881.3	1,529.0	3.19
MCC	Macarthur Coal Ltd	Dev/Prod.	4,481.9	1,761.5	2.54
WHC	Whitehaven Coal Ltd	Dev/Prod.	2,859.8	1,515.2	1.89
AZT	Aston Resources Ltd	Dev/Prod.	1,506.3	508.5	2.96
GCL	Gloucester Coal Ltd	Dev/Prod.	1,326.2	1,512.1	0.88
BTU	Bathurst Resources Ltd	Dev/Prod.	493.9	75.1	6.58
COA	Coal of Africa Ltd	Dev/Prod.	441.1	1,075.0	0.41
COK	Cockatoo Coal Ltd	Dev/Prod.	395.6	1,361.4	0.29
RES	Resource Generation Ltd	Dev/Prod.	92.9	2,271.0	0.04
ZYL	ZYL Ltd	Dev/Prod.	50.8	87.7	0.58
<b>Average</b>		<b>Dev/Prod.</b>			<b>1.98</b>

## Explorers

CPL	Coalspur Mines Ltd	Explorer	1,165.1	1,458.4	0.80
HUN	Hunnu Coal Ltd	Explorer	456.2	691.5	0.66
GNM	Gujarat NRE Coking Coal Ltd	Explorer	396.2	651.9	0.61
BND	Bandanna Energy Ltd	Explorer	382.6	1,239.5	0.31
AKM	Aspire Mining Ltd	Explorer	293.6	330.7	0.89
CLR	Carabella Resources Ltd	Explorer	224.5	95.3	2.36
NCR	Nucoal Resources NL	Explorer	199.8	504.5	0.40
RCI	Rockland Richfield Ltd	Explorer	160.7	481.3	0.33
MTE	Metrocoal Ltd	Explorer	117.0	923.0	0.13
AFR	African Energy Resources Ltd	Explorer	116.7	2,730.0	0.04
CCC	Continental Coal Ltd	Explorer	107.7	338.2	0.32
SMR	Stanmore Coal Ltd	Explorer	93.6	328.0	0.29
CWK	Coalworks Ltd	Explorer	79.0	863.5	0.09
REY	Rey Resources Ltd	Explorer	55.3	535.3	0.10
EER	East Energy Resources Ltd	Explorer	43.0	749.0	0.06
UNV	Universal Coal plc	Explorer	32.8	848.6	0.04
<b>Average</b>		<b>Explorer</b>			<b>0.46</b>

## Developing Countries Provide Long Term Demand...

### Long cycle ahead....

	Historical 5 Year Growth	China Current Intensity (per person)	Developed Economy Intensity (per person)	Potential Upside	Length of Growth Phase
Electricity Generation	10%	2.8 MWh	10.0 MWh	260%	15 – 20
Coal Demand	8%	2.2 tonnes	6.0 tonnes	170%	15 - 20

**1.8 Billion People in Indonesia, India & Brazil also at Early Stage**  
 (Indonesia 0.6MWh/per person & 8.5% p.a growth in electricity consumption/per person)

**Total Ordinary Shares on Issue**

**117.6m**

**Total Options on Issue**  
*Exercisable at 20c - \$1*

**11.6m**

**Cash & Receivables**

**USD\$ 5.5m**

**Production Debt (Noble Group)**

**USD\$ 2.0m**

ASX LISTED "PZC" : Full Details on website [www.panasiacorp.com.au](http://www.panasiacorp.com.au)



**Domenic Martino**  
**Chairman**

[dmartino@panasiacorp.com.au](mailto:dmartino@panasiacorp.com.au)

- Chairman & director of many public & private companies, with extensive Indonesian experience



**Alan Hopkins**  
**Pan Asia CEO**

[alan@panasiacorp.com.au](mailto:alan@panasiacorp.com.au)

- 25 yrs experience as CEO in public listed resource companies
- Many successful start-ups



**Cicip Hadisucipto**  
**Senior Economic Geologist**

[cicip.hadi@gmail.com](mailto:cicip.hadi@gmail.com)

- 25 years in Indonesian mining industry
- Currently Coal Assets Appraiser for the Stock Exchange Regulatory Board for the Republic of Indonesia

**Other Directors:**

Michael Pixley  
Luke Martino

**Company Secretary:**


Jason Campbell

**Technical & Support Team includes:**

Bill Hewitt	In Country Manager
Agus Sucipto	Exploration Manager – TCM Project
Dadzui Ismail	Underground Mining Manager – TCM Project
Andrew Ichwan	In Country CFO

# Milestones – Flagship Projects

1 <sup>st</sup> Generation Re-Rating				
Flagship JORC Project	2011 Q4	2012 Q1	2012 Q2	2012 Q3
TCM underground	Expanded JORC	Feasibility study Completed	Commercial Arrangements	Staged Development
TCM possible open pit	Establish co-operation with adjacent mine	Permitting & Planning	Development	Staged Production

Providing Cashflow				
Immediate Cashflow Project	2011 Q4	2012 Q1	2012 Q2	2012 Q3
Ranrich Projects (NAD & Other)	Production < 50 kt / month	Production 50 kt / month	Production 50 - 200 kt / month 	

2 <sup>nd</sup> Generation Re-Rating				
Flagship Exploration Project	2011 Q4	2012 Q1	2012 Q2	2012 Q3
BCKP	Forestry permits	Forestry permits & programme planning	Drilling	Drilling

**Emerging supplier of key resources to Asian markets**

- **Significant pre-development project**
- **Immediate cashflow**
- **High priority exploration**
- **Project pipeline**
- **Offtake rights**

**Aligned local partners in Indonesia**

**Major re-rating opportunity**



**THANK YOU**



## Forward Looking Statements

This presentation includes certain “forward looking Statements”. All statements other than statements of historical fact are forward looking statements that involve various risks and uncertainties. There can be no assurances that such statements will prove accurate and actual results and future events could differ materially from those anticipated in such statements. Such information contained herein represents management’s best judgement as of the date hereof based on information currently available. The Company does not assume the obligation to update any forward looking statement.

## Qualified Person

The technical information in this presentation is derived from Pan Asia’s ASX releases, each of which has been reviewed by our competent person, Marek Rosa, as defined in the 2004 Edition of the Australasian Code for Reporting of Exploration Results, Mineral Resources and Ore Reserves. Copies of prior releases are available on the ASX website or [www.panasiacorp.com.au](http://www.panasiacorp.com.au)

## Competent Persons’ Statement

The information in this release that relates to the Coal Resources of PT. Transcoal Minergy (“TCM”) is based on information compiled and reviewed by Mr. Marek Rosa, who is a Member of the Australasian Institute of Mining and Metallurgy (The AusIMM) and works full time for PT Kopex Mining Contractors based in Jakarta, Indonesia (Member of Kopex Group Poland).

Mr Rosa is a qualified geologist who has more than 20 years of relevant mining and geological experience in coal, working for major mining companies in Poland (17 years) and in Indonesia (4 years) as a consultant. He has National Polish geological license No II-1140 for research, exploration, resource and reserve estimation of deposits of basic minerals and coalbed gas methane. During this time he has either managed or contributed significantly to numerous mining studies related to the estimation, assessment, evaluation and economic extraction of coal in Poland and Indonesia. He has sufficient experience which is relevant to the style and type of deposit under consideration especially for Underground Mining and to the activity he is undertaking to qualify him as a Competent Person for Reporting of Exploration Results, Mineral Resources and Ore Reserves.

The estimates of Coal Resources have been carried out in accordance with the “Australasian Code for Reporting of Exploration Results, Mineral Resources and Ore Reserves” (December,2004) and Mr Rosa consents to the inclusion in this release of the Mineral Resources in the form and content in which it appears.



**MAREK ROSA** M.Sc. (Geology), MAusIMM

## Current JORC Resources at TCM

	TCM JORC RESOURCES
MEASURED (tonnes)	35,602,319
INDICATED (tonnes)	35,109,149
INFERRED (tonnes)	43,910,420
<b>TOTAL (tonnes)</b>	<b>114,621,889</b>

## Coal Quality Resource Summary

Seam ID	TM	IM	Ash	VM	FC	TS	CV (ar)	CV (adb)	CV (daf)	RD
	(% ar)	(% adb)	(% adb)	(% adb)	(% adb)	(% adb)	(Kcal/kg)	(Kcal/kg)	(Kcal/kg)	g/Cc
S4 (SR)	6.10	4.49	9.88	42.42	43.04	3.08	6,704	6,819	7,977	1.34
S5 (SU)	6.24	4.34	13.85	41.96	39.53	1.88	6,402	6,529	8,004	1.38
S6 (SM)	6.73	4.25	13.75	41.80	39.86	0.37	6,342	6,513	7,967	1.38
Weight average	6.41	4.33	13.52	41.97	40.18	1.52	6,425	6,566	7,986	1.37

The coal quality model will be further updated when all the coal quality results are in for the current drill programme.

Washability tests and subsequent analysis of the results have been undertaken on a 500t bulk sample to develop a conceptual Coal Handling and Preparation Plant design. Further testwork and analysis of all quality data will lead to a specification of a saleable product.

## Parameters used in Latest JORC Numbers

1. A total of 35 boreholes was used for the latest update of the resource estimation;
2. This preliminary resource update was made for the purpose of re-estimating the resource numbers and evaluating the tectonic structure of the rocks;
3. Approximately 6 boreholes remain to be done in the present drilling program;
4. Profiles, logs of boreholes and seam correlations have been completed;
5. Collar coordinates have been completed;
6. Laboratory testing: quality, Geotech, gas methane- not yet completed but underway;
7. Quality model still to be updated once all quality results received;
8. Full version of resource statements to be elaborated after all drilling and laboratory testing completed.

## Drill Spacing in the Calculation of Resources

Based on the better understanding of the complexity of the deposit achieved through the current drill programme, Kopex has now sub-divided resources into categories based on the following drill spacing:

	<b>17 OCTOBER 2011</b>	<b>31 JANUARY 2011</b>
<b>MEASURED</b>	<500m	<250m
<b>INDICATED</b>	500-1000m	250-500m
<b>INFERRED</b>	1000m-2000m	500m-1000m