

**Fast track
development of
Bullabulling Gold Project**

An emerging West Australian gold producer

Tuesday 31st May 2011

www.auzex.com

Disclaimer

Auzex Resources Limited (Auzex) has not considered the financial position or needs of the recipient in providing this presentation. Persons needing advice should consult their stockbroker, bank manager, solicitor, attorney, accountant or other independent financial or legal advisors. This presentation includes certain "forward-looking statements" which are not historical facts but rather are based on Auzex's current expectations, estimates and projections about the industry in which Auzex operates, and beliefs and assumptions regarding Auzex's future performance. Words such as "anticipates", "expects", "intends", "plans", "believes", "seeks", "estimates", "conceptual" and similar expressions are intended to identify forward-looking statements.

These statements are not guarantees of future performance & are subject to known and unknown risks, uncertainties and other factors, some of which are beyond the control of Auzex, are difficult to predict and could cause actual results to differ materially from those expressed or forecasted in the forward-looking statements. Auzex cautions shareholders and prospective shareholders not to place undue reliance on these forward-looking statements, which reflect the view of Auzex only as of the date of this presentation. The forward-looking statements made in this presentation relate only to events as of the date on which the statements are made. Auzex will not undertake any obligation to release publicly any revisions or updates to these forward-looking statements to reflect events, circumstances or unanticipated events occurring after the date of this presentation except as required by law or by any appropriate regulatory authority.

Competent Person Statement

The information in this report that relates to Exploration Results, Mineral Resources and Ore Reserves is based on information compiled by Mr John Lawton, who is a full-time employee of the Company and Member of The Australasian Institute of Mining and Metallurgy. The latest August 2010 Mineral Resource estimate was completed under the overall supervision and direction of Steven Hodgson, MAIG, of CSA Global. Both Mr Lawton and Mr Hodgson have sufficient experience that is relevant to the style of mineralisation and type of deposit under consideration and to the activities which they have undertaken to qualify as Competent Persons as defined in the 2004 Edition of the "Australasian Code for Reporting of Exploration Results, Mineral Resources and Ore Reserves". Mr Lawton and Mr Hodgson consent to the inclusion in this report of the matters based on the information in the form and context in which it appears.

Auzex Resources – Overview

- Advanced gold exploration/development company listed on ASX
- Flagship project is 50%-owned Bullabulling gold project, 65km from Kalgoorlie WA
- Bullabulling has JORC reported Mineral Resources of 1.98Moz contained gold – resource increase and upgrade due June 2011
- Phase two resource drilling underway focussing on the remaining 3.7km of Bullabulling Trend and highly prospective exploration targets
- High quality management team – ex Ross Mining, developed and managed multiple profitable low grade bulk tonnage gold projects and responsible for rapid development of Bullabulling as Manager
- Unsolicited takeover offer from UK based GGG Resources plc a distraction. Major shareholders supporting Auzex
- GGG bid currently valued at \$0.57, Auzex trading \$0.63
- Progressing secondary listing on AIM and spin-out of non-Bullabulling assets into separate entity

Bullabulling highlights

- Targeting minimum 1.0Moz Au maiden reserve & increased resource in June 2011
- Significant project upside potential
- Existing fully licensed mine with water, road access & power
- Excellent potential for shallow high margin operation, strong financials in short development period
- Bullabulling previous production – 371,474oz in the 90's (7.9Mt at 1.45g/t gold)



Phoenix Pit – Bullabulling gold project

Snapshot

Capital Structure

• Shares	95,102,968
• Share price	A\$0.63
• Market Cap:	A\$59.9m
Options (20c) exp Feb 2012	12,016,805
• Cash	\$6.5m
• Equity (GGG)	\$2.9m
• Enterprise Value	A\$50.5m

Shareholding (%)

• Baker Steel	9.3
• GGG Resources	8.4
• John Lawton (CEO)	7.5
• Colonial First State	4.9
• Directors/Management & Assoc.	12.3
• Top 20 Shareholders	58.5

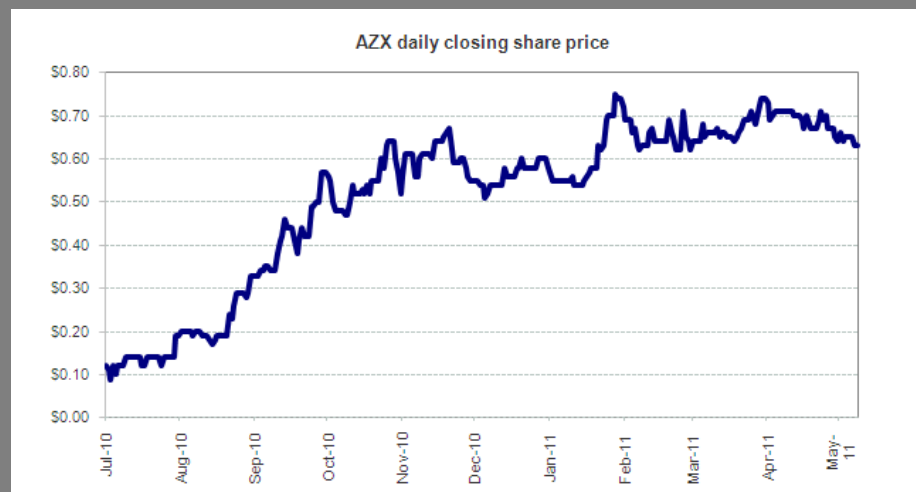
Bullabulling Resource Overview

Category	Contained Gold oz
• Inferred	1,982,000
• Total	1,982,000

note: 0.7 g/t cut-off grade

• AZX Share (50%) oz Au	991,000
• AZX EV/Resource oz Au	A\$51

• Share price chart



Management team with operational experience

- Senior management worked together at gold producer Ross Mining NL
- Ross Mining grew from greenfields explorer to developing 7 mines in QLD, NSW & Solomon Islands prior to merging with Delta Gold NL in 2000



CHRIS BAKER , Non-Executive Chairman BSc (Hons), MBA, FAusIMM, IOD
Director of Saunders Unsworth Ltd, NZ corporate consultancy in energy, mining, climate change, corporate strategy & govt relations, Chairman of Coal Association of NZ & Board member of Canberra based CO₂ CRC



JOHN LAWTON, Managing Director BSc(App.Sci), MAusIMM, MAICD
Founded the Company in 2003 & is major shareholder. Exploration geologist by profession, has been associated with the minerals industry for almost 40 years. Co-founded & managed Ross Mining in mid 1980s which became successful & respected mid tier low cost gold producer in the 1990s developing 7 mines in QLD, NSW & Solomon Islands, & delivered dividends to shareholders. He is Chairman of Peninsula Goldfields Pty Ltd



GREG PARTINGTON, Director of Operations PhD, MAusIMM
Founding Director of Auzex with extensive experience & considered at the forefront of spatial analysis & Geographic Information Systems (GIS) applied to mineral exploration. Background in gold exploration & business management throughout Australia & south-west Pacific. Greg is MD of his own company Kenex Pty Ltd



EUGENE ILIESCU, Non-Executive Director Eng Surv, Cert. Grad DipSocSc, Dip. OH&S
MD of Gantor Resources LLC based in Oman. Extensive experience in operations management & project development; most notably the Gold Ridge gold mine in Solomon Islands, Bass Strait Tasmanian Natural Gas Pipeline & major geothermal project in SA. Was MD of the Nauru phosphate operation & held senior management positions in copper mine development in the Middle East. He is a non-executive director of Kenex Pty Ltd



PAUL FREDERIKS Non-Executive Director and Company Secretary BBus(Acc), FCPA, FCIS, FAICD
Extensive public company financial & secretarial management experience in resources sector, including ASX reporting, financial modelling, forecasting, treasury management, hedging, project finance & corporate governance. Operates own consultancy, Company Sec of Geodynamics Ltd, non-executive director of China Steel Australia Ltd & GE Aviation Systems Australia Pty Ltd

Unsolicited Takeover Offer from GGG Resources plc

- On 14 March 2011 Auzex received an unsolicited, hostile and highly conditional takeover offer from UK based GGG Resources
- Offer consideration is seven (7) GGG shares for every five (5) Auzex shares and is contingent of a number of conditions including a minimum acceptance threshold of 50.1%
- The Offer value of A\$0.87 per share has decreased significantly since being made and is currently worth A\$0.57 per share despite gold reaching a new record of \$1,560+
- The Board has reviewed the Offer and UNANIMOUSLY recommends that all shareholders TAKE NO ACTION and DO NOT ACCEPT THE OFFER
- Rationale for Offer is flawed and misleading
- GGG's Offer places the near-term development at considerable risk
- Independent Expert concluded that the Offer was neither fair nor reasonable
- Technical Expert valued Auzex's other exploration assets at \$17.7m which are in the process of being demerged
- Auzex considers that the combined entity should be located in Australia (not the UK) and subject to the regulatory, financial and tax regime where the asset is located
- Auzex considers that the combined entity should have a local Board and management team to ensure 100% commitment and focus on Bullabulling

GGG Offer – DO NOT ACCEPT

Poor rationale for GGG Offer

- GGG did not have the support of Auzex's major shareholders prior to making the Offer
- GGG's key reason for making takeover was its claim that Auzex had delayed listing on ASX. Auzex played no role in this delay.
- GGG also claim that Auzex want to reduce to one drill rig. This is inaccurate and designed to mislead both shareholders into supporting the rationale for the GGG take over Offer.
- Auzex as Mine Manager is managing a 3 rig resource and exploration program and has designed a further accelerated exploration program for approval at the next Joint Venture meeting. The take over has delayed the next phase of development

GGG's inability to advance Bullabulling

- GGG have at no stage claimed to have a superior management or technical team to assume the ongoing development of Bullabulling yet are still convinced it is in the best interests of both sets of shareholders for them to operate Bullabulling from the UK
- GGG's take over assumes that Auzex's technical resources would remain with GGG post merger. THIS IS NOT THE CASE

No value for Auzex's other exploration assets

- Under GGG's Offer Auzex shareholders will receive less than 50% of the value of Bullabulling in the post merged entity, despite contributing 50% of Bullabulling
- No consideration is being provided to you for Auzex's highly prospective exploration assets valued by the Independent Expert at \$17.3m
- Auzex has commenced a process to demerge its exploration assets into a spin out company which will have its own management and funding. Only Auzex Shareholders on the register at the time of the demerger will benefit from these excellent resource assets

Potential significant adverse tax implications

- Capital Gains Tax (CGT) relief will not be available to Auzex Shareholders who hold Auzex Shares on capital account if GGG fail to own less than 80% of Auzex Shares by end of Offer period. GGG's Offer has a minimum acceptance of 50.1%
- Australian resident shareholders who have held their shares for less than 12 months will not qualify favourable CGT concessions
- Franking credits will not be available to GGG as a non-Australian entity on future profits

Offer NEITHER FAIR NOR REASONABLE

- The Independent Expert has concluded that the Offer is neither fair nor reasonable
- GGG's Offer was opportunistically timed to provide the illusion that Auzex Shareholders were being offered a substantial premium. Less than 50% of the proposed post merged company does not represent a significant premium on 50%
- GGG's Offer has an implied value of A\$0.57 as at 25 May 2011 representing no premium for control

Bullabulling gold project overview

Eastern goldfields, Western Australia

Bullabulling gold project – Overview

large & growing resource base

- JORC inferred resource 1,982,000oz Au contained gold
- Geological modelling identified continuous gold zones at 3 to 4 g/t Au within broad 0.5 to 1.5 g/t Au envelope in primary mineralisation
- gold mineralisation open in all directions especially at depth where high grades intersected

world class location

- Coolgardie goldfields, 65km sw of Kalgoorlie WA in highly prospective eastern goldfields,
- 1 hour flight from Perth
- Part of Yilgarn Craton, home of in excess of 160 gold deposits

existing infrastructure

- Existing fully licensed mine with water, road access & power
- Over 140km² permitted tenements including pastoral lease
- Run of Mine (ROM) stockpiles

historical production

- Bullabulling previous production by Resolute Mining Ltd – 371,474 oz (7.9Mt at 1.45g/t gold) during 1990s
- Mined from nine gold resources along mineralised 12km zone
- Acquired 400km of drill data with average depth of 40m

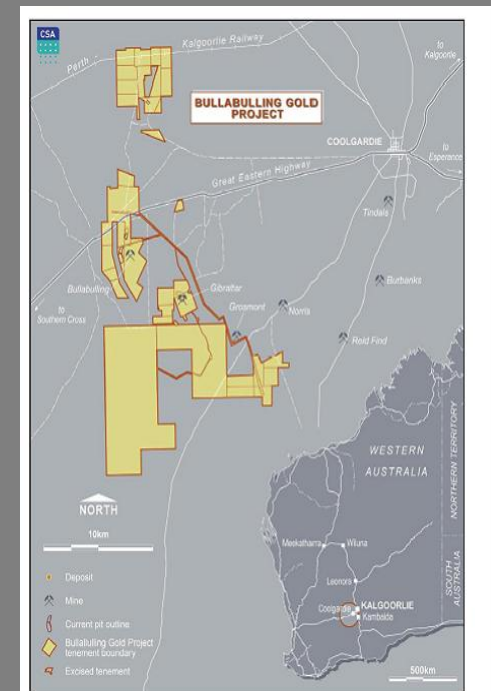


Figure 1. Project Location – Bullabulling Gold Project

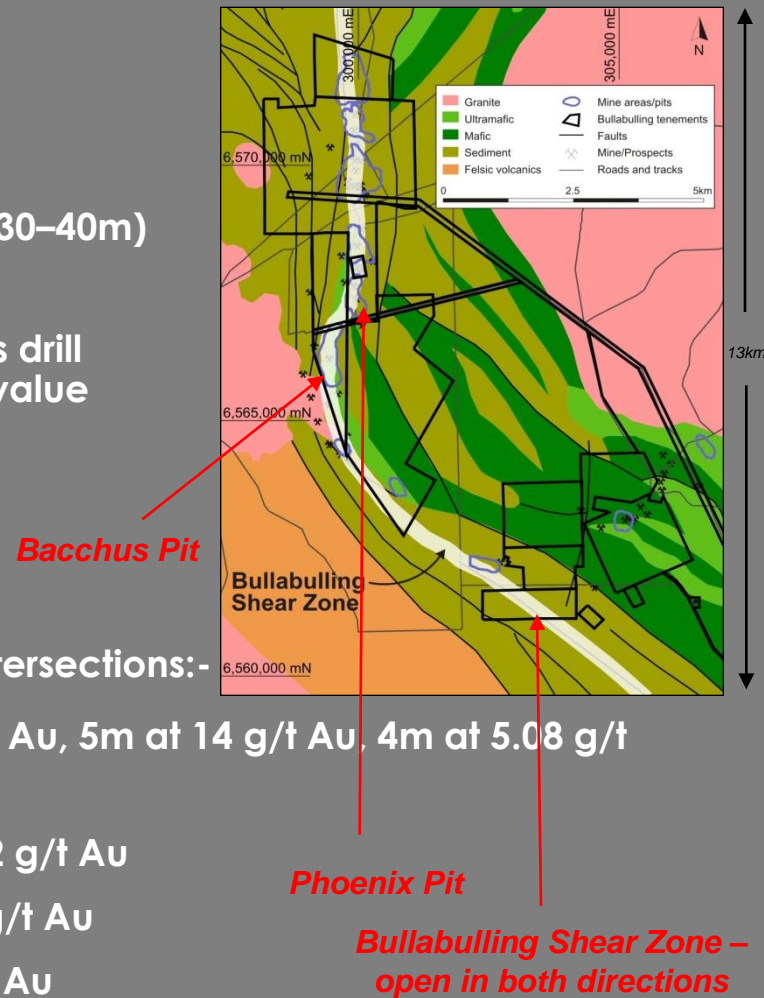
Bullabulling Trend – 12km strike zone

- 2,422 hectares granted mining tenure
- Nine gold resources along mineralised 12 km zone
- Ore previously mined predominantly from shallow pits (30–40m) & not into the primary mineralisation
- Extensive exploration database, over 400km of previous drill data at average depth of 34m – ~A\$30m replacement value
- 25,000 oz gold in dumps & ROM pads at surface
- Existing mining infrastructure



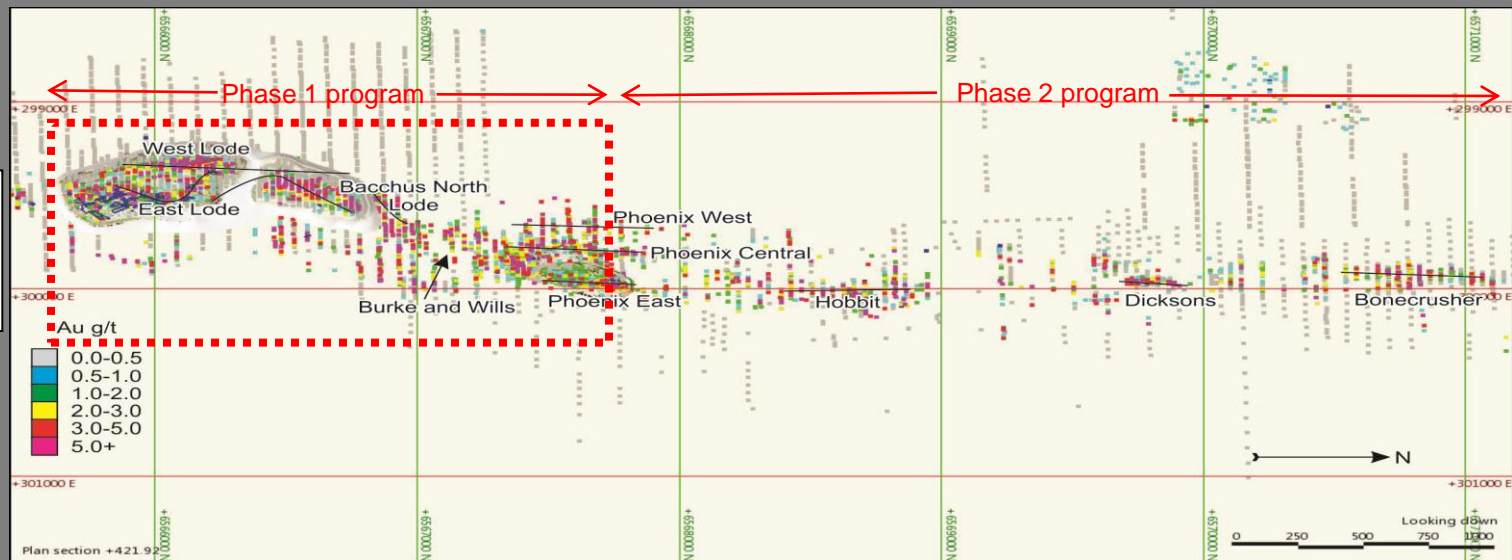
Previous High grade drill intersections:-

- Bacchus Pit: 7m at 77 g/t Au, 5m at 14 g/t Au, 4m at 5.08 g/t Au, 3m at 9.16 g/t Au
- Endeavour Pit: 3m at 21.2 g/t Au
- Dicksons Pit: 4m at 14.5 g/t Au
- Hobbit Pit: 9m at 10.5 g/t Au
- Edwards pit: 9m at 11.9 g/t Au



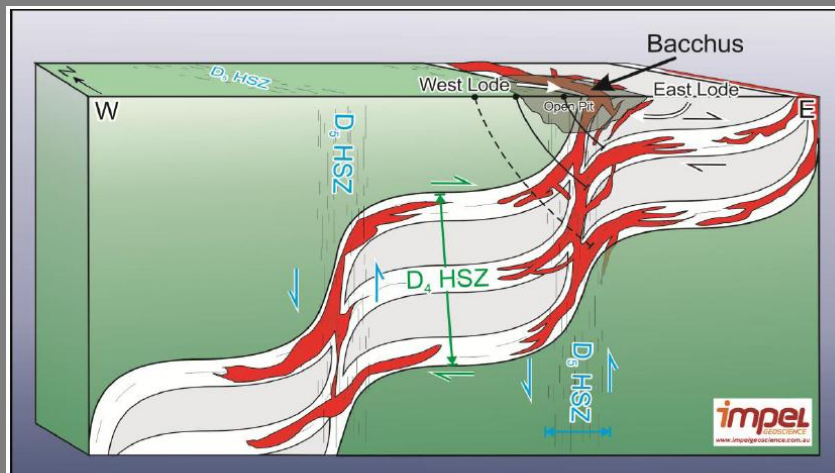
Consistent & Continuous Gold Mineralisation

- Phase 1 program (completed Apr 2011) focused 2.3km area of 12km strike between Bacchus & Phoenix open pits – expected minimum target reserve 1.0Moz Au.
- Phase 2 drill resource and exploration drill program commenced in May 2011 targeting the remaining 3.7km of the Bullabulling Trend and exploration targets to the South
- Structural Study confirmed gold mineralisation can be traced through 40m spaced drill sections along entire 6km Bullabulling trend which is open to the north & south & at depth
- Higher grade (3-4 g/t Au) continuous zones (100s of metres), 5-20m wide & open at depth located within lower grade halo (0.5-1.5 g/t Au)

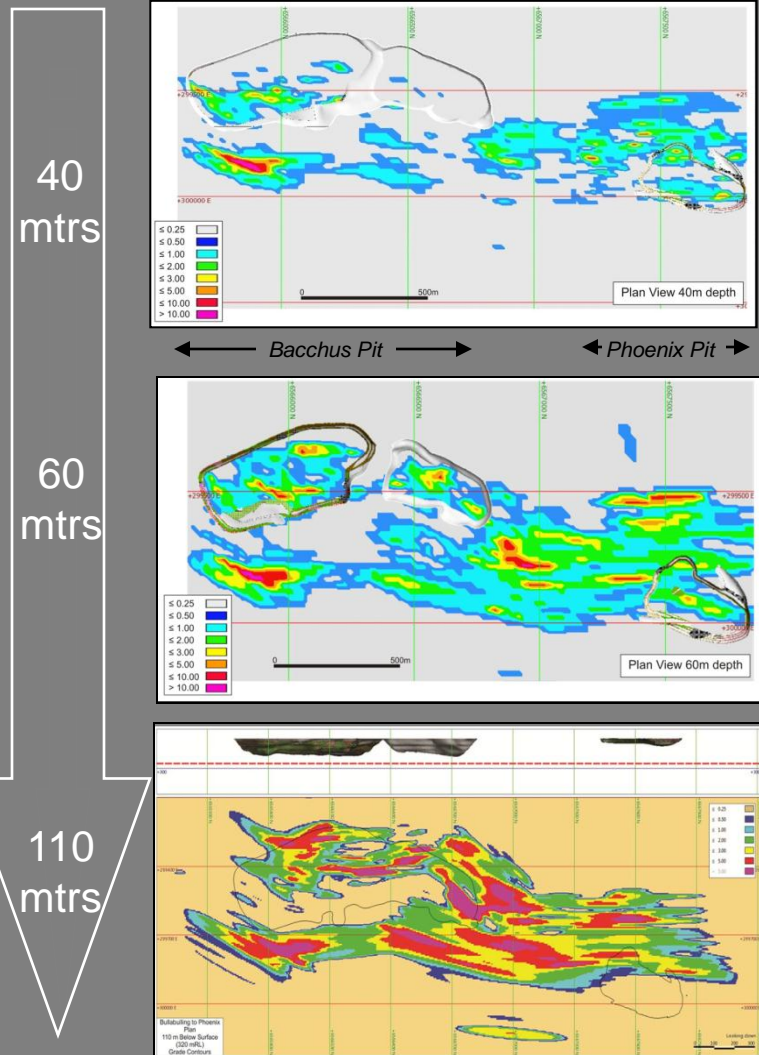


Huge upside potential – grade increases at depth

- Previous mining focussed on shallow laterite & supergene gold mineralisation – shallow pits (30-40m)
- Shallow gold mineralisation spotty & low grade with poor continuity
- 371,000oz Au mined, mostly under 50m depth
- Grade & continuity of gold mineralisation increases with depth – tonnage (& contained oz gold) expected to increase significantly



3D Model of the structural framework of the Bullabulling Trend showing interpreted extensions to known mineralisation

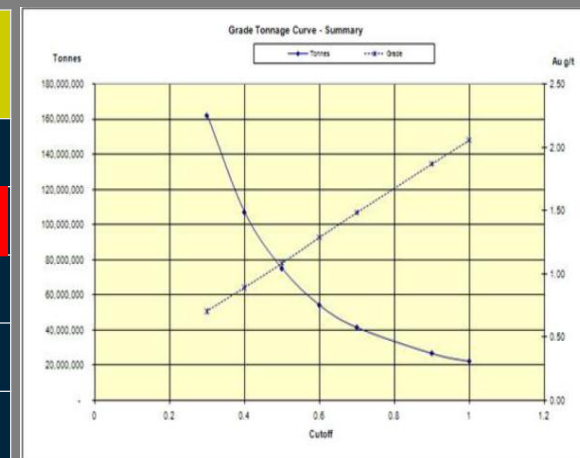


Resource.....finalising upgrade and maiden reserve

- JORC compliant resource boosted 450% to 1.98Moz contained gold – Aug 2010
- New Mineral Resource estimate restricted mainly to 6km strike along Bullabulling Trend where gold mineralisation exhibits excellent lateral & vertical continuity & open in all directions
- New Mineral Resource excludes all historic production of 371,000 oz & excludes surface dumps reported to contain ~25,000 oz gold or high grade zones below 120m cut-off
- Current drilling intersected new mineralisation zones along strike & below known gold zones
- ~23% reported intersections have returned gold outside of current resource model

Bullabulling Grade Tonnage Curve, Surface (200 RL) to 120m depth (315 RL)

Gold cut-off g/t	Tonnes	Grade g/t Au	Contained oz Au
0.9	26,739,000	1.87	1,606,500
0.7	41,517,000	1.48	1,981,600
0.6	54,231,000	1.29	2,245,900
0.5	75,013,000	1.08	2,611,800
0.4	107,094,000	0.89	3,081,800



Bullabulling tonnes & average grades were estimated at different cut-off grades for mineralisation less than 120m below surface

Aggressive resource and exploration drill focus

- 31,000m program Nov 2010-Apr 2011 – completed
 - Infill drilled between high grade & current resource floor (120m)
 - QAQC drilling of previous (Resolute) drilling to upgrade resource (from current Inferred category)
 - Complete Bacchus to Phoenix infill drilling to increase resource & determine initial reserve
 - Metallurgical drilling 5 diamond holes in primary ore to complete gold recovery & process cost
 - Highlights to date inc 39m at 4.93g/t, 18m at 4.37g/t, 1m at 152g/t, 23m at 2.11g/t, 10m at 6.39g/t, 6m at 4.53 g/t, 4m at 7.54g/t, 5m at 8.20g/t & 2m at 30.27g/t Au.
- 194,158m of new drilling has been planned
 - Infill resource drilling on the remaining 3.7km of Bullabulling Trend
 - Exploration drilling to test repetitions of the stacked lodes at depth
 - Exploration drilling at Gryphon and Eileen and other regional targets
 - High grade deeps program

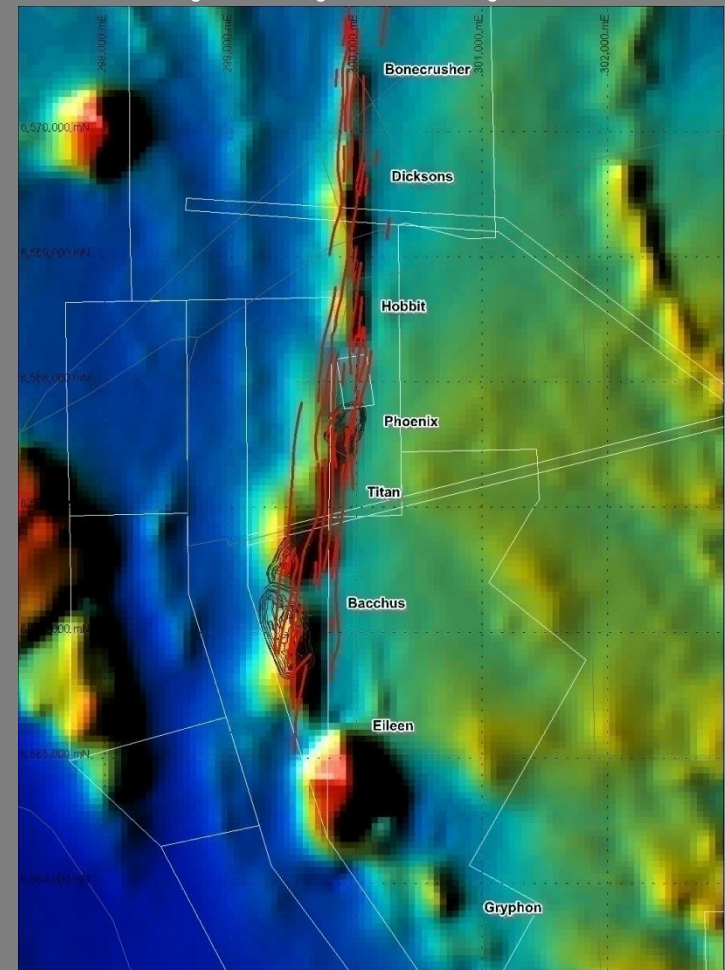


194,000m of planned drilling at Bullabulling, submitted by Auzex to WA Mines Department

Exploration upside

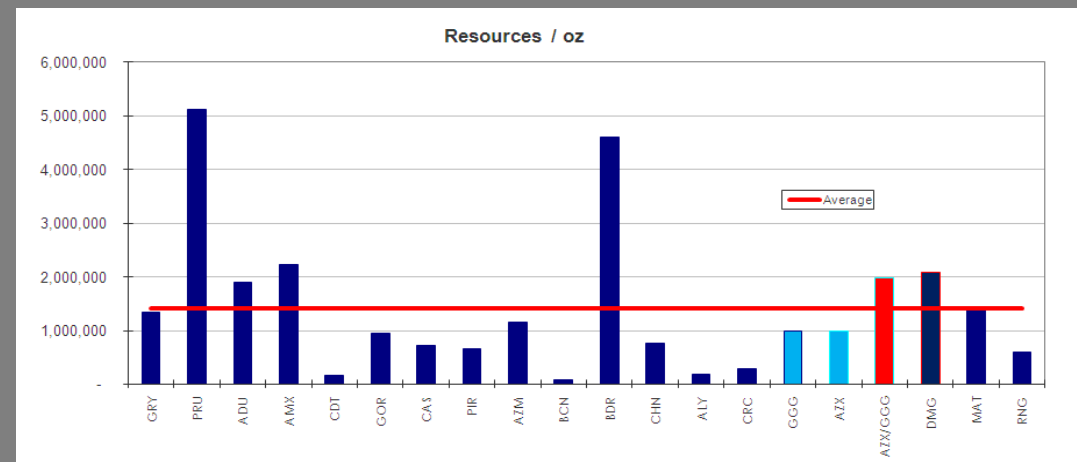
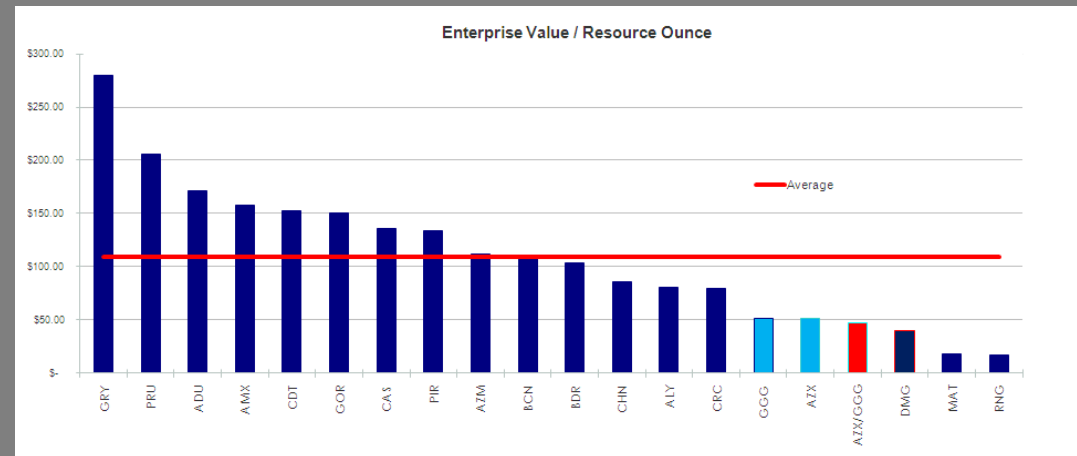
- Focus to date has been on 2.3km of Bullabulling Trend between Bacchus & Phoenix pits where drilling density is highest
- Wide zones of mineralisation proven to be continuous on 40m sections throughout 6km Trend
- Previous drilling along Bullabulling Trend & at depth inadequate to define extent of mineralisation – significant increase expected from additional drilling
- Excellent exploration potential within 10km of Bullabulling Trend
 - Airborne magnetics, soil & RAB geochemistry defined laterite & supergene targets
 - Gryphon & Eileen to south of main zone defined drill targets with significant upside
- Exploration drill program planned to commence in late May 2011

Regional Air Magnetics Bullabulling Trend



Peer Comparison

- AZX trading ~A\$51.00
EV/Resource oz, well below peers (~\$110.00/oz)
- Updated resource/maiden reserve expected Jun 2011
- Average JORC resource estimate size across peer group ~1.4m oz Au. Significant increase in AZX resource due in Jun 2011
- On combined basis Bullabulling has 5th largest resource estimate of its advanced explorer peers. This is expected to significantly increase following completion of current resource drilling program



Auzex – Summary

- Highly experienced management – built & operated low grade large tonnage gold projects
- Main project is Bullabulling advanced gold project targeting 1m+ reserve & increase/upgraded resource by June 2011
- Bullabulling 1,982,000 oz Au JORC Inferred Resource & previously produced 7.9Mt at 1.45g/t gold (371,474 oz Au)
- Pedigree address in world class Yilgarn Craton of WA, 65 km from Kalgoorlie
- Targeting production 2013
- Market cap ~\$59.9m & enterprise value ~\$50.5m*
- Portfolio of high quality under explored projects with multiple opportunities for success, valued by Independent Expert at \$17.3m
- Excellent potential for high margin operation, strong financials & short development period
- Exposure to strong gold price
- Well respected shareholders inc Baker Steel, Colonial First State & Resource Capital Funds
- Consistent news flow & opportunities for re-rating

Question Time

Thank you

auzex RESOURCES
LIMITED